

# The Congenital Heart Collaborative

University Hospitals  
Rainbow Babies & Children's  
Nationwide Children's Hospital

## Physician Referral Guide



## Two Leaders Affiliate to Provide the Very Best Care

University Hospitals Rainbow Babies & Children's and Nationwide Children's hospitals have formed an innovative affiliation – The Congenital Heart Collaborative – for the care of patients with congenital heart disease from fetal life to adulthood. The innovative collaboration provides families with access to one of the most extensive and experienced heart teams – highly skilled in the delivery of quality clinical services, novel therapies and a seamless continuum of care. From aligning the service line structure consistently across institutions to implementing quality projects and extending programs, The Congenital Heart Collaborative has built a premier congenital heart program centered on leading-edge clinical care, education and research.

The team has established twice-weekly case management conferences via secure teleconferencing to bring together multidisciplinary experts on both campuses. Cases are presented for surgical or interventional consideration, which generates discussions related to medical management and quality care.

Future projects include expanding the cardiac stepdown unit and building new state-of-the-art hybrid cardiac catheterization and operating room suites.

For the care of adults with congenital heart disease, The Congenital Heart Collaborative is combining expertise with University Hospitals Harrington Heart & Vascular Institute adult heart and heart surgery experts, technology and programs. This unique, highly collaborative, multidisciplinary approach to congenital heart care provides access to the latest clinical trials, advanced technology and procedures/techniques not currently available at other area hospitals. The special adult and pediatric collaboration allows for adult patients to access ACHD-certified experts and pediatric congenital heart surgery specialists for complex surgical repair with recovery in the adult cardiothoracic intensive care unit. These connections provide the optimal situation – where the pediatric and adult cardiology and surgery resources are both institutionally and physically linked.



## Our Services

### Consultations and treatments:

- Acquired heart disease
- Adult congenital heart disease
- Arrhythmias
- Congenital heart disease
- Fetal heart program
- Hyperlipidemia
- Hypertension
- Prenatal diagnosis and counseling
- Preventive cardiology
- Syncope

### Interventional cardiology:

- Adult congenital interventional therapies
- Balloon angioplasty and valvuloplasty
- Coarctation angioplasty and stenting
- Device ASD closure
- Diagnostic cardiac catheterization
- Endovascular stenting
- Fetal cardiac intervention
- Hybrid procedures
- PDA occlusion
- Pulmonary artery rehabilitation
- Transcatheter valve replacement

### Electrophysiology:

- Cryoablation
- Device follow-up
- Diagnostic and interventional electrophysiology
- Implantation of cardioverter-defibrillators
- Implantation of loop recorders
- Implantation of pacemakers and leads
- Radiofrequency ablation
- Tilt table testing
- Transesophageal ECG and pacing

### Congenital heart surgery:

- Atrial septal defect repair
- Cardiac transplantation
- Chest wall deformity repairs
- Extracorporeal membrane oxygenation (ECMO)
- Repair of tetralogy of Fallot
- Surgical treatment of single ventricle defects
- Repair atrioventricular canal defects
- Repair or replacement of dysfunctional heart valves
- Ventricular assist devices
- Ventricular septal defect repair

### Noninvasive cardiology tests and imaging:

- Ambulatory ECG monitoring
- Cardiac MRI
- Electrocardiography (ECG)
- Exercise testing
- Fetal echocardiography
- Pacemaker evaluation
- Tilt table testing
- Transthoracic and transesophageal echocardiography



## The Congenital Heart Collaborative Physician Leadership Team



**Timothy F. Feltes, MD, FACC**

*Co-Director, The Congenital Heart Collaborative at UH Rainbow Babies & Children's Chief, Pediatric Cardiology, Co-Director of the Heart Center at Nationwide Children's Hospital, Professor, Clinical Pediatrics at The Ohio State University College of Medicine, Andy Paxton Endowed Chair in Cardiology*

**Timothy.Feltes@NationwideChildrens.org**

**Special interests:** Medications in the treatment of congenital heart disease, pediatric cardiology, neonatal inflammatory response



**Christopher Snyder, MD**

*Division Chief, Pediatric Cardiology, KeyBank – Meyer Family Chair for Excellence in Leadership, UH Rainbow Babies & Children's Hospital Associate Professor, Case Western Reserve University School of Medicine*

**Christopher.Snyder@UHhospitals.org**

**Special interests:** Syncope, arrhythmias, palpitations, pacemaker and ICD implantation and follow-up, radiofrequency and cryoblation of accessory pathways and ectopic foci, management of supraventricular and ventricular tachycardia, Wolff-Parkinson-White syndrome risk assessment, cardiac murmurs



**Mark E. Galantowicz, MD, FACS**

*Co-Director, The Congenital Heart Collaborative at UH Rainbow Babies & Children's Chief, Pediatric Cardiothoracic Surgery, Co-Director of the Heart Center at Nationwide Children's Hospital, Professor, Clinical Surgery at The Ohio State University College of Medicine, Murray D. Lincoln Endowed Chair in Cardiothoracic Surgery*

**Mark.Galantowicz@NationwideChildrens.org**

**Special interests:** Surgical treatment and repair of newborns with congenital heart defects, adolescent and adult congenital heart disease, cardiopulmonary transplantation



**Eric J. Devaney, MD**

*Chief, Pediatric Cardiothoracic Surgery Clinical Professor, Surgery, Case Western Reserve University School of Medicine*

**Eric.Devaney@UHhospitals.org**

**Special interests:** Complex neonatal cardiac surgery, mechanical circulatory support and cardiac transplantation for end-stage heart failure



**Alexandre T. Rotta, MD**

*Medical Director, Cardiothoracic Surgery Intensive Care Chief, Pediatric Critical Care Medicine Linsalata Family Chair in Pediatric Critical Care and Emergency Medicine, UH Rainbow Babies & Children's Hospital Professor, Case Western Reserve University School of Medicine*

**Alexandre.Rotta@UHhospitals.org**

**Special interests:** Cardiac critical care, mechanical ventilation, pediatric critical care, acute lung injury

## Pediatric Heart Physicians



**Aimee Armstrong, MD**

*Director, Cardiac Catheterization & Interventional Therapies, The Heart Center at Nationwide Children's Hospital*

**Aimee.Armstrong@NationwideChildrens.org**

**Special interests:** Pediatric and fetal interventional cardiology, clinical trials in congenital interventional catheterization and innovations research for pediatric cardiac catheterization



**Janine Arruda, MD**

*Director, Non-Invasive Imaging*

**Janine.Arruda@UHhospitals.org**

**Special interests:** Echocardiography, MRI, congenital heart disease, noninvasive imaging in congenital heart disease



**Martin L. Bocks, MD, FACC**

*Director, Pediatric Interventional Cardiology Associate Professor, Case Western Reserve University School of Medicine*

**Martin.Bocks@UHhospitals.org**

**Special interests:** Pediatric medical device development, bioresorbable technology for cardiac applications, wireless pressure sensors, ex situ organ perfusion and preservation, and pre-clinical disease modeling and device testing

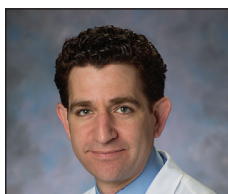


**Maura Berkelhamer, MD**

*Pediatric Anesthesiologist*

[Maura.Berkelhamer@UHhospitals.org](mailto:Maura.Berkelhamer@UHhospitals.org)

**Special interest:** Pediatric heart surgery



**Darren P. Berman, MD**

*Co-Director of Pediatric Cardiac*

*Catheterization and Interventional Therapy at Nationwide Children's Hospital and Assistant Professor at The Ohio State University College of Medicine*

[Darren.Berman@NationwideChildrens.org](mailto:Darren.Berman@NationwideChildrens.org)

**Special interests:** Pediatric cardiology, catheterization and catheter-based therapies; transcatheter valve therapies and bioabsorbable materials



**John P. Cheatham, MD**

*Director, Pediatric Interventional Cardiology,*

*Co-Director of the Heart Center*

*at Nationwide Children's Hospital,*

*Professor, Pediatric and Internal Medicine at*

*The Ohio State University College of Medicine,*

*George H. Dunlap Endowed Chair*

*in Interventional Cardiology*

[John.Cheatham@NationwideChildrens.org](mailto:John.Cheatham@NationwideChildrens.org)

**Special interests:** Nonsurgical interventions in pediatric cardiology, hybrid therapies



**Nancy C. Dobrolet, MD, FACC**

*Director, Pediatric Cardiac Stepdown*

*Associate Professor*

[Nancy.Dobrolet@UHhospitals.org](mailto:Nancy.Dobrolet@UHhospitals.org)

**Special Interests:** Complex congenital heart disease care, single ventricle inter-stage care, neurocardiac and development of children born with congenital heart disease



**Anna N. Kamp, MD, MPH**

*Pediatric Cardiologist*

[Anna.Kamp@NationwideChildrens.org](mailto:Anna.Kamp@NationwideChildrens.org)

**Special interests:** Arrhythmias in children, arrhythmias in adults with congenital heart disease, sudden arrhythmic death syndromes



**Naomi J. Kertesz, MD**

*Pediatric Cardiologist, Director, Electrophysiology and*

*Pacing at Nationwide Children's Hospital*

[Naomi.Kertesz@NationwideChildrens.org](mailto:Naomi.Kertesz@NationwideChildrens.org)

**Special interests:** Diagnosis and management of arrhythmias, including radiofrequency and cryoablation of supraventricular and ventricular arrhythmias



**Patrick I. McConnell, MD**

*Pediatric Cardiothoracic Surgeon*

[Patrick.McConnell@NationwideChildrens.org](mailto:Patrick.McConnell@NationwideChildrens.org)

**Special interests:** Congenital cardiothoracic surgery, adult congenital heart disease, pediatric mechanical assist devices



**Aymen N. Naguib, MD**

*Director, Anesthesiology*

*at Nationwide Children's Pediatric Heart Center*

[Aymen.Naguib@NationwideChildrens.org](mailto:Aymen.Naguib@NationwideChildrens.org)

**Special interest:** Improving outcomes after cardiac surgery



**Shelley Ohliger, MD**

*Pediatric Cardiac Anesthesiologist*

[Shelley.Ohliger@UHhospitals.org](mailto:Shelley.Ohliger@UHhospitals.org)

**Special interests:** Pediatric anesthesia, pediatric cardiac anesthesia



**Sarah Plummer, MD**

*Pediatric Cardiologist*

[Sarah.Plummer@UHhospitals.org](mailto:Sarah.Plummer@UHhospitals.org)

**Special interests:** Fetal cardiology, noninvasive imaging, transesophageal echocardiography



**Michael Saalouke, MD**

*Pediatric Cardiologist*

[Michael.Saalouke@UHhospitals.org](mailto:Michael.Saalouke@UHhospitals.org)

**Special interests:** Heart murmurs in infants to young adults, syncope, arrhythmia diagnosis and management, adult congenital heart disease, sports athlete clearance

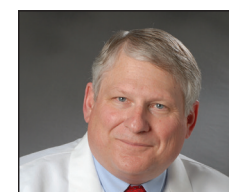


**Jill Shivapour, MD**

*Director, Pediatric Cardiology Fellowship*

[Jill.Shivapour@UHhospitals.org](mailto:Jill.Shivapour@UHhospitals.org)

**Special interests:** Pediatric and adult congenital heart disease, exercise physiology in patients with congenital heart disease and arrhythmias, arrhythmias in the fetal, pediatric and adult congenital populations

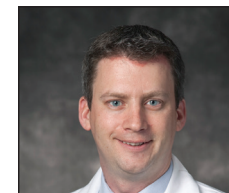


**John Stork, MD**

*Pediatric Anesthesiologist*

[John.Stork@UHhospitals.org](mailto:John.Stork@UHhospitals.org)

**Special interests:** Pediatric pain management, pediatric heart surgery



**James Strainic, MD**

*Director, Fetal Heart Program*

[James.Strainic@UHhospitals.org](mailto:James.Strainic@UHhospitals.org)

**Special interests:** Fetal cardiology, pediatric cardiology, echocardiography in congenital heart disease, 3-D echocardiography, pediatric exercise physiology, connective tissue disease in children, transesophageal echocardiography

## Pediatric Cardiothoracic Surgery Locations

### **UH Rainbow Babies & Children's Hospital\***

Prentiss Surgery Center  
2101 Adelbert Road  
Cleveland, Ohio 44106

### **Nationwide Children's Hospital\*\***

Cardiothoracic Surgery  
700 Children's Drive  
Columbus, Ohio 43205

## Pediatric Cardiology and Cardiothoracic Surgery Consultation Locations

### **UH Rainbow Babies & Children's Hospital\***

6th Floor Rainbow Building, Suite 667  
2101 Adelbert Road  
Cleveland, Ohio 44106

### **UH Parma Medical Center**

6115 Powers Boulevard  
Medical Arts Center 4, Suite 201  
Parma, Ohio 44129

### **UH Concord Health Center**

7500 Auburn Road, HHVI Suite 1500  
Concord Township, Ohio 44077

### **UH Landerbrook Health Center**

5850 Landerbrook Drive, Suite 240  
Mayfield Heights, Ohio 44124

### **UH Medina Health Center**

4001 Carrick Drive, Suite 220  
Medina, Ohio 44256

### **UH Mentor Health Center**

9000 Mentor Avenue, HHVI Suite 212  
Mentor, Ohio 44060

### **UH Solon Health Center**

34055 Solon Road, Suite 200  
Solon, Ohio 44139

### **UH Westlake Health Center**

960 Clague Road, Suite 1600  
Westlake, Ohio 44145

### **West Ford Center, Rear Bldg.**

Michael Saalouke, MD  
Pediatric Cardiology  
4135 Boardman-Canfield Road, Suite 102  
Canfield, Ohio 44406

## Physician Resources

### **24/7 Transfers and Urgent Consultations**

For quick, efficient transfers and 24/7 consultations with attending physicians, please call the UH Transfer Referral Center at 216-844-1111 or 1-800-421-9199.

### **Pediatric and Adult Congenital Heart Disease Referrals**

The Pediatric Heart Center offers triage services and same or next-day availability for patients with urgent needs. When you call 216-844-3528 to refer a patient, please identify the level of urgency so that staff can best accommodate you and your patient.

### **24/7 Access to a Pediatric Cardiologist**

To speak with a pediatric cardiologist, call 216-844-6081.

### **Fetal Cardiac Intervention**

To connect with the Fetal Cardiac Intervention Team to speak about a candidate for fetal intervention, please call 1-866-929-2099.

### **Insurance Access Line**

Insurance Access Line experts are available to help families understand their insurance options including confirmation of **"in-network"** and **"out-of-network"** situations, and make the most of their coverages. For more information, or help with any insurance question, call the Insurance Access Line at 216-983-1500.

## Find Us Fast

### **24/7 Physician Access Line**

Patient transfers, referrals, admissions and appointments

**216-UH4-PEDS (216-844-7337)**

### **Rainbow.org**

*\*All surgical consultations for northern Ohio families are provided at UH Rainbow Babies & Children's Hospital.*

*\*\*Heart transplantation cases are performed at Nationwide Children's Hospital in Columbus.*